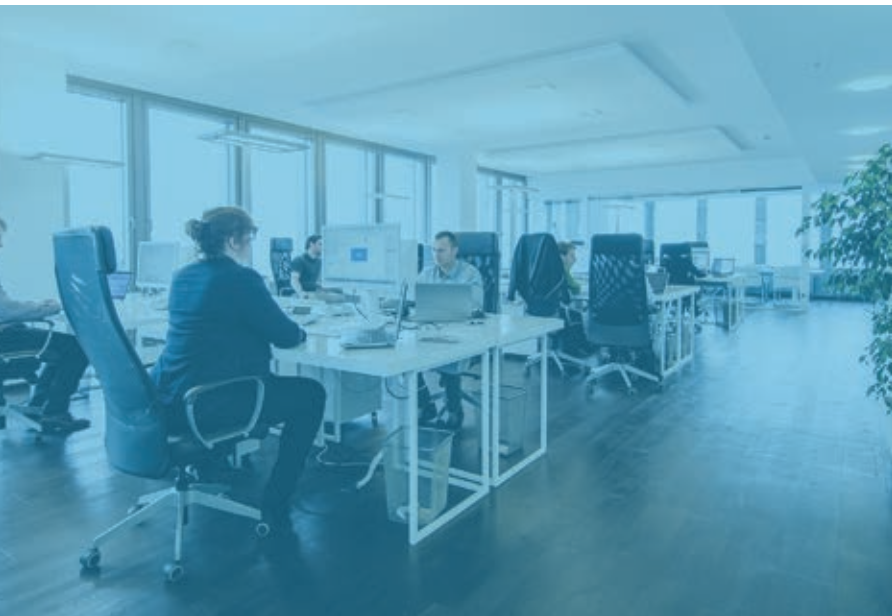


MEMAQUA

WATER DISPENSERS

www.memaqua.co.za





Products



JX13 Water Dispenser

Specification

- 2ltrs per an hour cold
- 5ltrs per an hour hot
- 90 Watt Compressor Unit
- Hot and Cold Option
- Storage facility
- Push In buttons



Floor Standing Water Dispenser YLR-LW-2-5-40LBS

Specification

Type: Hot & Cold

Installation: Stand

Housing Material: Plastic

Certification: CB, CE, EMC, EMF, RoHS, SASO

Dimensions (mm): 315 x 295 x 845

Power (W): 590

Voltage (V): 230

Brand Name: LONWE

Model Number: YLR-LW-2-5-40LBS

Color: White

Cooling System: compressor

Function: hot and cold



Water Dispenser Model: B

Specification

- 2ltrs per an hour cold
- 90 Watt Compressor Unit
- Cold and Ambient option
- Push to fill Taps



Water Dispenser Model C

Specification

- 2ltrs per an hour cold
- 90 Watt Compressor Unit
- Cold and Ambient option
- Push In buttons



M5 Water Dispenser

Specification

- 2ltrs per an hour cold
- 5ltrs per an hour hot
- 90 Watt Compressor Unit
- Hot and Cold Option
- Storage facility
- Push In buttons



M2 Water Dispenser

Specification

- 2ltrs per an hour cold
- 5ltrs per an hour hot
- 90 Watt Compressor Unit
- Hot and Cold Option
- Storage facility
- Push In buttons



Stainless Steel Water Fountain

Specification

- KSW-291 with Filtration System
- Cold and Ambient
- 430X330X1020 (WXDXH)
- Stainless Steel
- Compressor Cooled
- 8lt Cold water per hour
- Cooling temperature 6-10

Degrees

- Bubbler connected to chill tank
- 3 stage filtration system



Reverse Osmosis Water Dispenser

Description

- Free Standing Water Dispenser
- Hot and Cold
- Compressor Cooling
- Automatic Temperature Control
- Stainless Steel Water Tank- Welded hot tank (1L).
- With SS pipes connection.
- 0.5mm side steel panel.
- Electric cooling
- 220-240V, 50-60Hz.
- 550W for heating and 68W for cooling.
- Hot water temperature 85-95 degree.
- Cold water temperature 10-15 degree.
- Includes a Reverse Osmosis System



WT-12 Counter

Specification

- Counter top water dispenser with one piece blow-mold housing construction for easy maintenance.
- Stylish gravity fed water dispenser.
- Push in water dispensing levers.
- Optional hot water safety guard.
- Compressor cooling system with environment-friendly refrigerant.
- Stainless steel hot and cold tank.
- Provides hot and cold water.
- Detachable drip tray.
- Convertable between bottled water system and POU system.
- Spill-proof collar compatible with 3 gallons or 5 gallons bottles.
- Voltage: 220 - 240V/50-60Hz
- Gross Weight: 12KG
- Net Weight: 11KG
- Dimensions: 440mm x 340mm x 500mm



Counter M111

Specification

- Table Top Water Dispenser
- Cold And Ambient
- Compressor Cooling
- Automatic Temperature Control
- Stainless Steel Water Tank
- Low Noise Design
- Anti-Bacterial Material
- 2L Cold Water per hour
- **Voltage:** 220 - 240V/50-60Hz
- **Gross Weight:** 12KG
- **Net Weight:** 11KG
- **Dimensions:** 350mm x 330mm x 570mm



Heavy Duty Water Dispenser

Description

- Stand alone water dispenser with one piece blow-mold housing construction for easy maintenance.
- Stylish gravity fed water dispenser.
- Push in water dispensing levers.
- Optional hot water safety guard.
- Compressor cooling system with environment-friendly R134a refrigerant.
- Stainless steel hot and cold tank.
- Provides hot and cold water.
- Detachable drip tray.
- Convertable between bottled water system and POU system.
- Spill-proof collar compatible with 3 gallon or 5 gallon bottles
- Color options available when ordering MOQ of 20ft container..



15L Water Dispenser Filter Bottle

Step 1: Mineral Stone

Function: The mineral stone houses the germaniums which promotes health and prevents cancer.

Step 2: Active Carbon and Silver Activated Carbon

Function: On this phase; chlorine, THS and organic chemicals are removed along with the bad smell discharged by the water.

Step 3: WSM – 300

Function: The WSM- 300 prevents the (PH) Storage tank from re-population by enabling the material to dissolve any type of bacteria in the water.

Step 4: Silica Sand

Function: Acidic components are removed effectively.

Step 5: Zeolite

Function: Zeolite prevents our bodies from accumulating heavy metals such as gold, silver and lead mercury by removing them during the 5th stage of the water filtration system.

Step 6: Mineral Sand

Function: Minerals are released by the mineral sand which helps restore the PH balance of the body fluid.

Step 7: Water Tap with Magnet

Function: The magnetic zed water has free moving molecules which promotes vitality for the human body.

The functions and features contained in a mineral water pot have the ability to turn regular water into mineral water and this process doesn't require any use of electricity.



18.9L Water Dispenser
Bottle



18.9L Water Dispenser
Bottle With Handle



MemAqua Solutions
info@memaqua.co.za
Tel: 084 954 3297
jeremy.naidoo@memaqua.co.za